

iVG (unknown maker)

Likely active period:

Around 1800

Born/baptised : Unknown

Died : Unknown

Many pieces I have encountered by this maker are in some way atypical. The one konfytt fork, loosely described as 'Hanoverian pattern' (as the end turns up in the same direction as the tines) is lacking the rib of conventional Hanoverian pattern flatware, and the 'feather edge' decoration (more common on Old English flatware) is restricted to the terminal rather than the full length of the handle. The snuff box has an unusual shape, and I have not seen any other barrel beaker with a goblet mounted within.

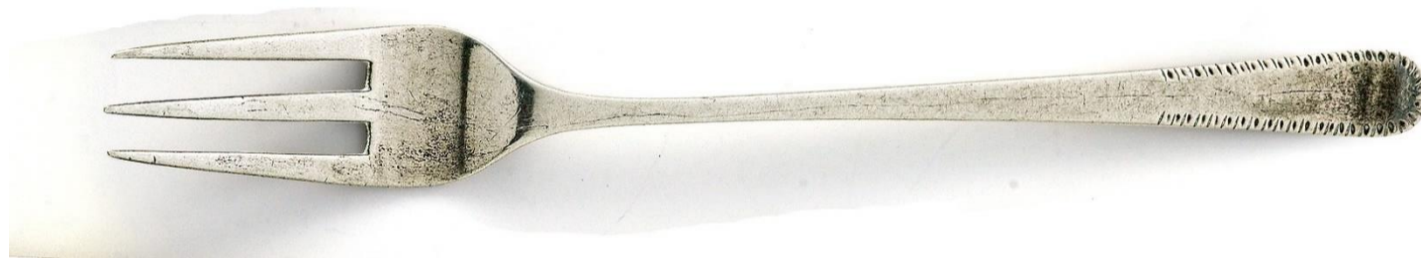
Welz illustrates an oval teapot with narrow band of engraved leafage, having characteristics of Welz's "Heterogeneous Period (1795-1830)", and an abnormally large (Welz calls it 'clumsy') spout.

Flatware

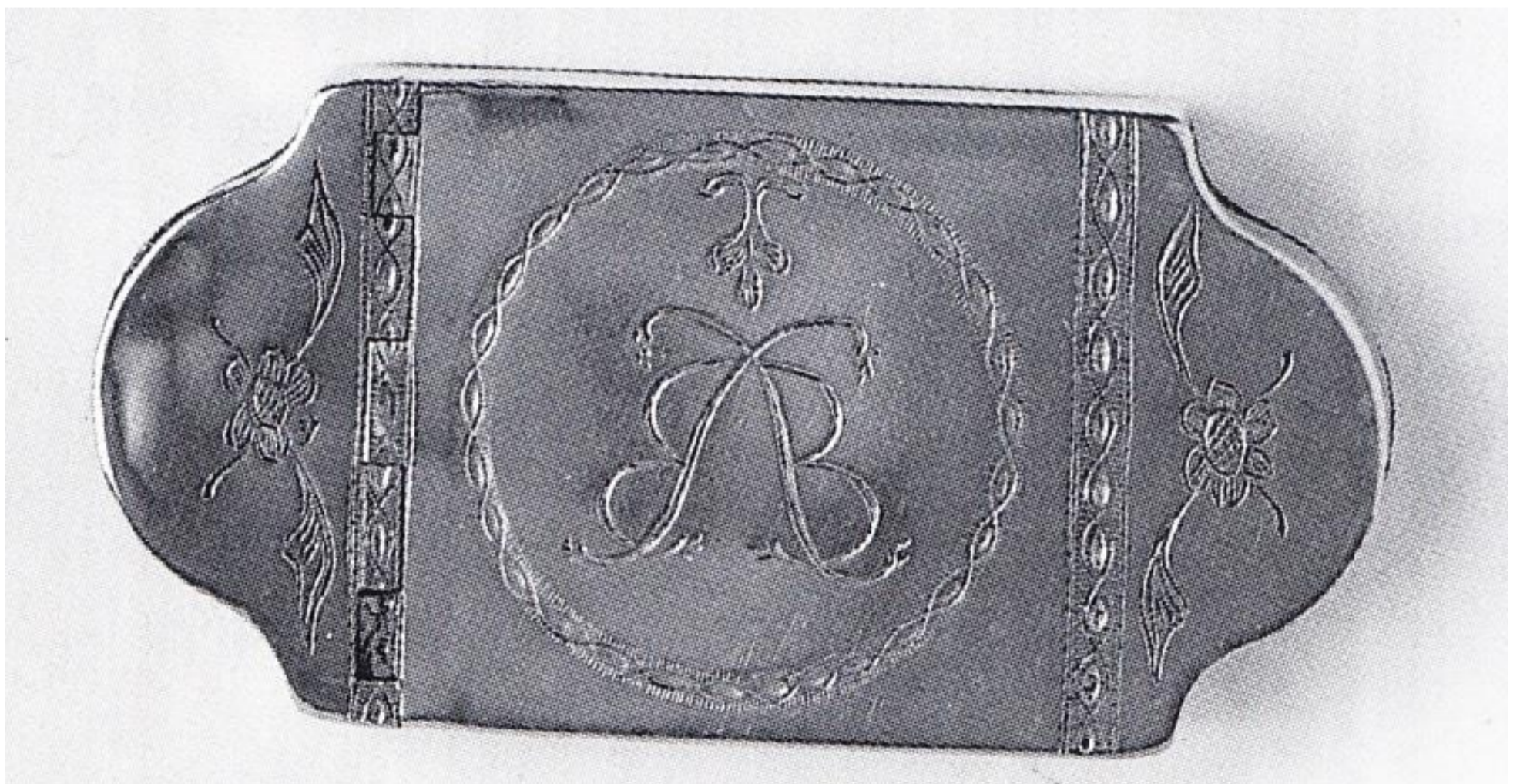
Old English pattern – tablespoon



Konfytt Forks



Snuff box

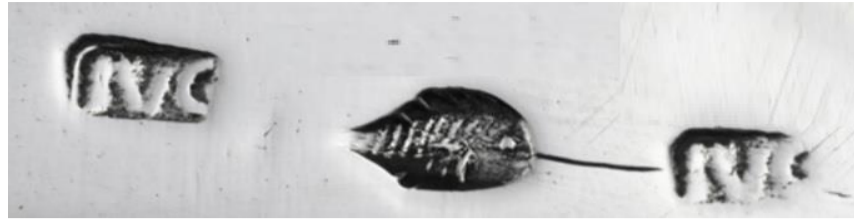


Other items

Beaker



Marks



Rarity indicator

| | | | | | |
|----------|------|-------------|------|-------------|------|
| Flatware | Rare | Snuff boxes | Rare | Other items | Rare |
|----------|------|-------------|------|-------------|------|

Note: a set of flatware of the same category and by the same maker is counted as a single item.

Key (relative rarity within each category):

| | |
|-----------|--|
| Available | more than 5% of items in our database |
| Scarce | 1 to 5% of items in our database |
| Rare | fewer than 1% of items in our database |
| None | No items encountered |

Auction price history

Note: only sales of single items by public auction, including online auction platforms, are shown here. Unsold lots and job lots have been excluded. This list does not purport to be complete.

| Sale date | Item category | Item description | Price realised | Price type * |
|------------|---------------|--|----------------|--------------|
| 1994/05/23 | Snuff boxes | Snuff box by I:VG, rectangular with outcurved ends, hinged lid engraved with reversed 'B's within a bright-cur circular cartouche flanked by two floral motifs, 70g, 9cm wide | ZAR1760 | 2 |
| 2004/05/27 | Beakers | Barrel-shaped beaker-cum-spirit cup, Maker's mark IVG (Welz no 170), in the form of a wine barrel engraved at one end with beaker, bottle and cup, and at the other Ano PGVDByl 1800, detachable cover fitted with detachable vase-shaped spirit cup, maker's mark only on barrel, barrel cover and twice on base of spirit cup, 9.5cm high, 171gr | GBP3840 | 1 |

* Price types:

1 - Auction result hammer price

2 - Auction result including buyer's commission

3 - Auction result including buyer's commission and VAT