

Thomas Lock Townsend

Likely active period:

1815-1840

Born/baptised : Unknown

Died : Unknown

Thomas Townsend, although apparently the first of the British silversmiths to immigrate to the Cape, appears to have been far less prolific in his silver output than his brother, John Townsend. The brothers worked together in 1824 and 1825, and pieces made by this partnership bear their joint maker's mark. Thomas Townsend left the trade in 1840 to run an equipment store and fitting out warehouse for three years, and then kept a lodging house for two years. In 1849 he advertised as a working jeweller and mechanical dentist.

Flatware is in the fiddle pattern and includes table-, dessert- and teaspoons and konfyf foks.

I have seen reference to one snuff box, oval in shape and quite plain, with a gilded interior.

Other items include christening mugs, cylindrical in shape with moulded rims and quite plain except for acanthus leaf decoration on the scroll handles, and a silver cane mount.

Flatware

Fiddle pattern



Snuff boxes

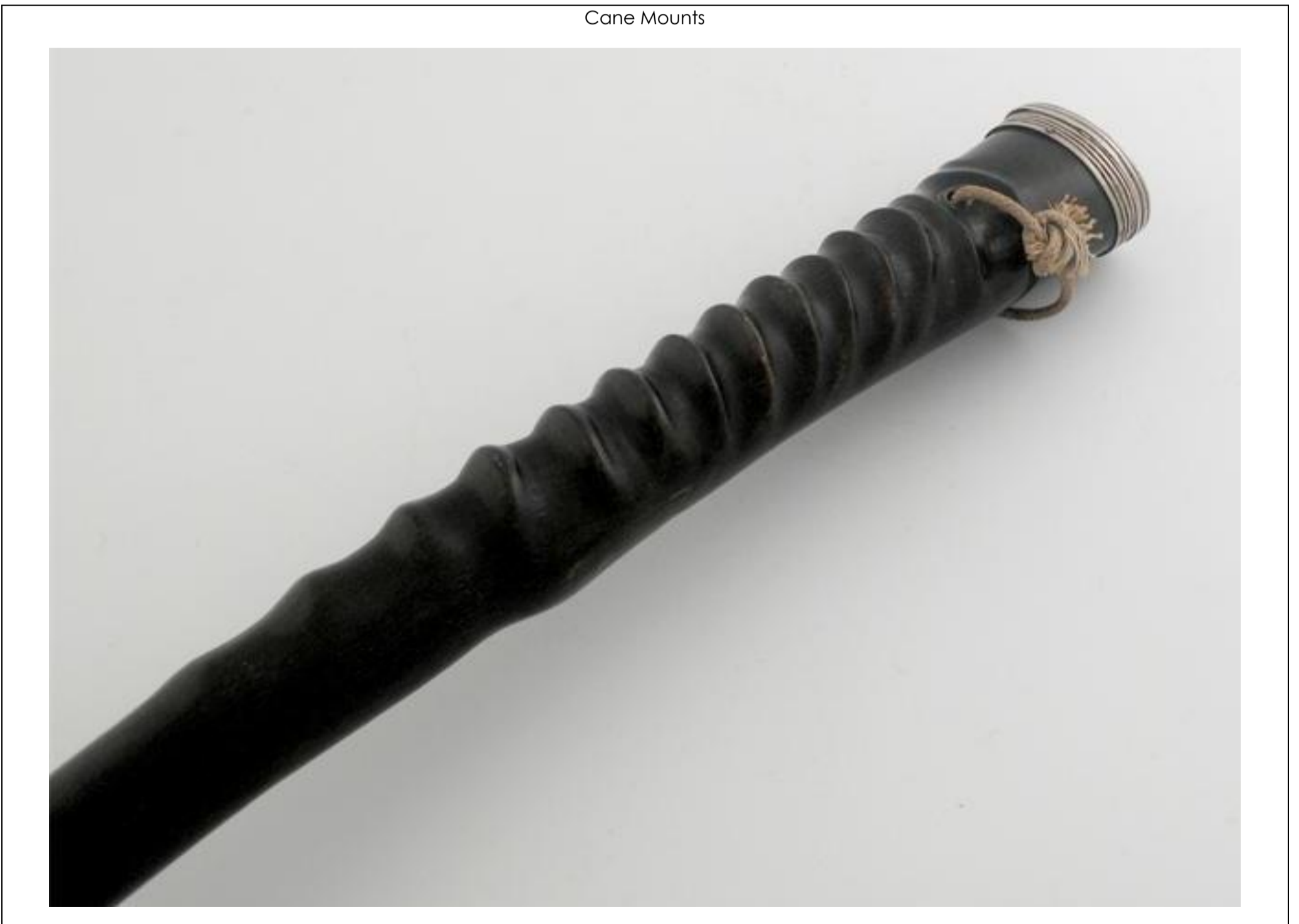


Other pieces

Christening mugs



Cane Mounts



Marks



Rarity indicator

Flatware	Scarce	Snuff boxes	Rare	Other items	Scarce
----------	--------	-------------	------	-------------	--------

Note: a set of flatware of the same category and by the same maker is counted as a single item.

Key (relative rarity within each category):

Available	more than 5% of items in our database
Scarce	1 to 5% of items in our database
Rare	fewer than 1% of items in our database
None	No items encountered

Auction price history

Note: only sales of single items by public auction, including online auction platforms, are shown here. Unsold lots and job lots have been excluded. This list does not purport to be complete.

Sale date	Item category	Item description	Price realised	Price type *
2017/10/16	Snuff boxes	Snuff box, oval, with gilt interior, 7,5cm wide, 75g	ZAR14779	3
2016/03/14	Mugs - christening	Two christening mugs, Thomas Lock Townsend, cylindrical bodies, one engraved 'L.W.E.C', the scroll handle with applied heart-shaped foliate motif, gilt interior, 140g, 8cm high; the other with leaf-capped scroll handle, 130g, 7,6cm high	ZAR34104	3

* Price types:

1 - Auction result hammer price

2 - Auction result including buyer's commission

3 - Auction result including buyer's commission and VAT