

Lawrence Holme Twentyman

Likely active period:

1818-1832

Born/baptised :

5 May 1793

Died :

8 June 1852

Born 5 May 1793 in Liverpool. Arrived at the Cape 12 June 1818. Granted a permit to leave the Cape on 8 March 1832. Returned to the Cape for short periods in 1835, 1837, 1844 and 1846. Died 8 June 1852 and buried at Highgate cemetery.

Most silverware bearing his mark will date between 1818 to 1832, when the English influence was dominant at the Cape.

Tablespoons, table forks, dessert spoons, dessert forks and teaspoons, including some services, are usually in the fiddle, kings and fiddle-and-thread patterns. Occasionally other patterns are found – for example fiddle pattern with shell drop.

A wide range of serving pieces was made in these patterns – konfynt forks, sugar tongs, fish slices, butter knives, sauce ladles, soup ladles, salad servers, marrow scoops, basting spoons, mustard spoons and salt spoons. Some designs do not conform to the common flatware patterns, such as the marrow scoop with a flared central handle.

Snuff boxes are usually rectangular with plain scroll thumbpieces and engraved bands of leafage, although oval boxes are also found. Some boxes have cast floral borders and thumbpieces.

A variety of other objects are found, including beakers, christening mugs, meat skewers, pap boats, salvers, sugar bowls, vinaigrettes and wine labels. Generally English in appearance and style, sometimes quite plain and sometimes with engraved decoration, but pieces will be encountered that are unique in their style and decoration (see, for example, the covered sugar bowl).

Spoons and forks

Fiddle pattern



Kings Pattern



Fiddle and Thread Pattern



Fiddle and Shell Pattern



Fiddle pattern with shell drop



Serving flatware

Fish slices



Sauce ladles



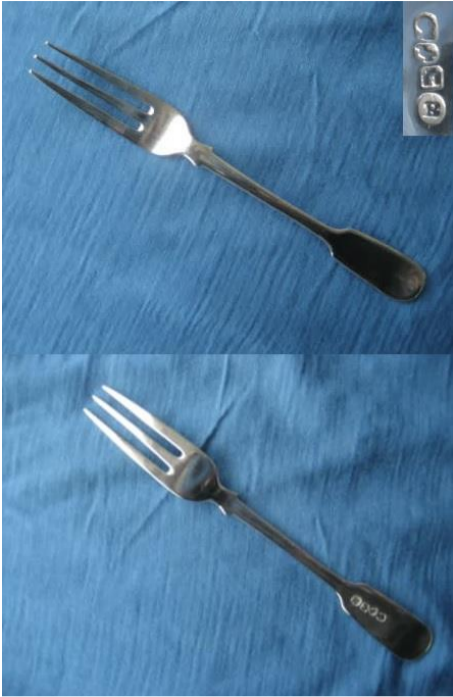
Butter knives



Soup Ladles



Konfytt fork



Salad Servers



Salt spoon



Marrow Scoops



Sugar Tongs



Basting Spoons



Mustard Spoon



Snuff boxes



Other pieces

Beakers



Christening Mug



Salver



Vinaigrette



Pap Boat



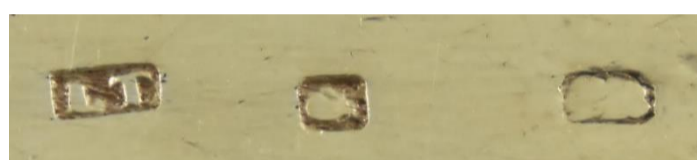
Meat Skewer



Sugar Bowls



Marks



Rarity indicator

Flatware Available Snuff boxes Available Other items Available

Note: a set of flatware of the same category and by the same maker is counted as a single item.

Key (relative rarity within each category):

Available	more than 5% of items in our database
Scarce	1 to 5% of items in our database
Rare	fewer than 1% of items in our database
None	No items encountered

Auction price history

Note: only sales of single items by public auction, including online auction platforms, are shown here. Unsold lots and job lots have been excluded. This list does not purport to be complete.

Sale date	Item category	Item description	Price realised	Price type *
1975/03/03	Forks - table	Two fiddle pattern forks by Lawrence Twentyman, 3oz	ZAR120	1
1975/03/03	Spoons - table	Fiddle pattern table spoon by Lawrence Twentyman, 2oz	ZAR110	1
1990/08/27	Spoons - teaspoons	Four fiddle pattern teaspoons by Lawrence Twentyman, monogrammed terminals, 75g	ZAR650	1
1993/03/08	Spoons - table	Three fiddle pattern tablespoons by Lawrence Twentyman, each terminal initialled 'L' and engraved with an indistinct bird crest and motto 'MERCY IS MY DESIRE', the bowls dented, 185g	ZAR550	2
1995/03/29	Meat skewers	Skewer probably by Lawrence Twentyman (F, castle, LT), shaped terminal fitted with a ring, 14g	ZAR605	2
1996/04/15	Forks - table	Three kings pattern table forks by Lawrence Twentyman, 260g	ZAR275	2
1997/04/14	Ladles - soup	Fiddle pattern soup ladle by Lawrence Twentyman, 260g	ZAR2090	2
1997/10/21	Salad servers	Pair of fiddle pattern salad servers by Lawrence Twentyman, the terminals engraved with an armorial, 290g	ZAR7150	2
1999/10/11	Flatware - sets	Set of Kings Pattern flatware by Lawrence Twentyman comprising 12 table forks, 12 table spoons, 12 dessert forks, 12 dessert spoons, 10 teaspoons, 4000g, sold with 12 English silver table knives and 12 dessert knives, Sheffield 1980	ZAR35200	2
1999/10/11	Marrow scoop	Marrow scoop by Lawrence Twentyman, 40g	ZAR3850	2
1999/10/11	Pap boats	Pap boat by Lawrence Twentyman, 60g, 2.5cm high	ZAR9900	2
1999/10/11	Spoons - table	A pair of fiddle pattern tablespoons by Lawrence Twentyman, 120g	ZAR1380	2
1999/10/11	Spoons - teaspoons	Two fiddle pattern teaspoons by Lawrence Twentyman, one terminal initialled 'PM', one bowl repaired, 40g	ZAR517,50	2
1999/10/11	Wine labels	Wine label by Lawrence Twentyman, oblong, engraved 'Madeira' within a leafy border, 10g, 4.5cm wide	ZAR5720	2
2001/12/04	Ladles - soup	Fiddle pattern soup ladle, Lawrence Twentyman, engraved with script initials JSM, 34cm (13 3/8in), 6 1/2oz.	GBP247	2
2006/01/25	Snuff boxes	Oblong snuff box, with bright engraved foliate borders and pricked, initialled 'L.C.M.V.' by Lawrence Holme Twentyman of the Cape 1820-30, 3in (7.5cm) wide. 2.7oz	GBP500	1

2008/07/30	Spoons - basting	Fiddle Pattern basting spoon, crested by Lawrence Twentyman, Cape of Good Hope, South Africa, 4oz	GBP360	1
2008/10/28	Snuff boxes	Oblong snuff box, with raised shell and scroll borders and a large chased thumb piece, the sides with wiggework engraving, gilt interior, by Lawrence Twentyman of the Cape, c.1840, 3in (7.6cm) long, 3oz	GBP700	1
2008/10/29	Mugs - christening	Flared mug with a reeded scroll handle and border engraving, the base inscribed 'September 10th 1868', by Lawrence Twentyman, 3in (7.5cm) 5oz	GBP300	1
2008/11/12	Snuff boxes	Snuff box by Lawrence Holme Twentyman, of rectangular form with concave sides, the cover prick-dot engraved with a sea weed panel within a border of flowers of the Union, the base with a diaper panel within a foliate border, interior re-gilt, length 7cm.	GBP216	2
2009/10/08	Flatware - sets	An assembled set of fiddle pattern flatware, Lawrence Holme Twentyman, comprising: 7 tablespoons, 6 dessert spoons, 6 table forks, 1080g	ZAR11710	3
2009/10/08	Knives - butter knife	Fiddle pattern butter knife, Lawrence Twentyman, the blade engraved with bright-cut foliate decoration, 50g	ZAR2928	3
2010/03/15	Spoons - basting	A pair of fiddle pattern basting spoons, Lawrence Holme Twentyman, each terminal engraved with a crest, 245g	ZAR9368	3
2010/10/11	Spoons - basting	Two fiddle pattern basting spoons, Lawrence Holme Twentyman, 235g	ZAR8783	3
2011/03/07	Flatware - sets	Twenty four items of King's Pattern flatware by Lawrence Twentyman, comprising 6 table forks, 6 table spoons, 12 dessert spoons, 1955g	ZAR16710	3
2011/09/26	Fish slices	Kings pattern fish slice, Lawrence Holme Twentyman, the blade with a part-reeeded border, 234g	ZAR9368	3
2011/09/26	Ladles - sauce	Kings pattern sauce ladle, Lawrence Holme Twentyman, 90g	ZAR2342	3
2011/09/26	Ladles - soup	Kings pattern soup ladle, Lawrence Holme Twentyman, 321g	ZAR19495	3
2013/10/21	Snuff boxes	Snuff box, Lawrence Holme Twentyman, rectangular, the front and reverse engraved with wriggle-work, foliate borders and a vacant cartouche, gilt interior, 50g, 5.5cm wide	ZAR9368	3
2014/03/17	Ladles - soup	Fiddle pattern soup ladle, Lawrence Holme Twentyman, the terminal engraved with the initials 'JEB', 240g	ZAR6792	3
2014/03/17	Salvers	Salver, Lawrence Twentyman, circular, the centre engraved with a crest, the rim with reeded border, raised on three claw and ball feet, some oxidisation, 380g, 19,3cm diameter	ZAR45472	3
2015/03/16	Flatware - sets	Part set of eighteen items of fiddle pattern flatware, Lawrence Holme Twentyman, comprising: six tablespoons, six dessert spoons and six table forks, 1010g	ZAR20463	3
2015/03/16	Snuff boxes	Snuff box, Lawrence Holme Twentyman, rectangular, the hinged cover engraved with a rosette within a rectangular panel decorated with wrigglework, enclosed by a stiff-leaf border, the base similarly engraved, gilt interior, 69g, 7cm wide	ZAR7026	3
2015/03/16	Spoons - basting	Two fiddle pattern basting spoons, Lawrence Holme Twentyman, 235g	ZAR20463	3
2015/10/12	Sugar bowls	Two-handed sugar bowl and cover, Lawrence Holme Twentyman, urn-shaped, to a spreading domed circular foot, the sides applied with ribbed flowerhead and leaf handles, the part-gadrooned rim divided by four flowerhead and foliate motifs, the domed cover with flowerhead finial, dents, 630g, 15cm high	ZAR34104	3
2016/03/14	Mugs - christening	Christening mug, Lawrence Holme Twentyman, tapering cylindrical, engraved 'RDJ' within a ribbon-tied wreath between wrigglework borders, with scroll handle and gilt interior, repairs where the handle meets the body, 8,5cm high, 145g	ZAR15916	3
2016/10/10	Fish slices	Kings pattern fish slice, Lawrence Holme Twentyman, the blade with a part-reeeded border, 245g	ZAR8197	3
2016/10/10	Ladles - soup	Fiddle pattern soup ladle, Lawrence Holme Twentyman, 200g	ZAR8197	3
2016/10/10	Spoons - dessert	Set of five fiddle and shell pattern dessert spoons, Lawrence Holme Twentyman, the terminals engraved with the initial 'L', 225g	ZAR5270	3
2017/10/16	Spoons - table	A set of ten fiddle pattern tablespoons, seven with the terminal engraved with a crest, 725g	ZAR13642	3
2019/09/08	Forks - konfyf forks	Fiddle pattern three-prong konfyf fork, 12.8cm long, 15.4g	ZAR1995	1
2021/06/07	Spoons - table	Four 'Fiddle' pattern table spoons, Lawrence Holme Twentyman, pinhead dents, 315g	ZAR5863	2
2021/10/11	Ladles - soup	Fiddle pattern soup ladle by Lawrence Holme Twentyman, the terminal engraved with the initials JEB, the bowl with two dents, 240g. (This is the same ladle that sold on 2014/03/17)	ZAR4104	3
2021/11/25	Fish slices	Fiddle pattern fish slice, Lawrence Holme Twentyman, the blade with part reeded border, hallmarks slightly rubbed, 30cm long, 169,5g	ZAR6000	1

* Price types:

1 - Auction result hammer price

2 - Auction result including buyer's commission

3 - Auction result including buyer's commission and VAT