

Johannes Hendricus Beyleveld

Likely active period:

1814-1827

Born/baptised : 13 June 1792

Died : 1827

Son of Marthinus Beyleveld of Amsterdam and Abigael Johanna Combrink. His son, Jan Bernardus, carried on his business.

Flatware is found in the fiddle pattern and in a unique pattern with a twisted stem and pointed engraved terminal. It includes table spoons, dessert spoons, teaspoons and konfyf forks. Christies auctioned an item described as a gold spatula with a twisted stem, pointed terminal and a small shell bowl chased with a foliate motif on the reverse, measuring 18cm in length.

A cowrie shell snuff box has a silver mount of typical form.

A teapot by this silversmith is in the English form, with bands of engraving typical of Cape Silver of Welz's 'Heterogeneous Period'.

Spoons

Fiddle pattern



Twisted stem and pointed engraved terminal



Serving flatware

Konfyf Forks



Snuff boxes

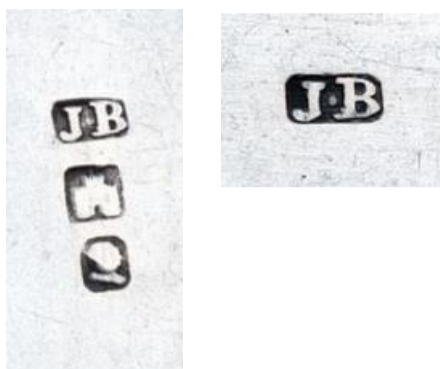


Other pieces

Teapot



Marks



Rarity indicator

Flatware	Scarce	Snuff boxes	Rare	Other items	Rare
----------	--------	-------------	------	-------------	------

Note: a set of flatware of the same category and by the same maker is counted as a single item.

Key (relative rarity within each category):

Available	more than 5% of items in our database
Scarce	1 to 5% of items in our database
Rare	fewer than 1% of items in our database
None	No items encountered

Auction price history

Note: only sales of single items by public auction, including online auction platforms, are shown here. Unsold lots and job lots have been excluded. This list does not purport to be complete.

Sale date	Item category	Item description	Price realised	Price type *
1998/04/15	Spatula	A gold spatula with a twisted stem, pointed terminal and a small shell bowl, chased with a foliate motif on the reverse by Johannes Hendricus, (Jan) Beyleveld, 18cm long, 0.75oz.	GBP288	2
1999/10/11	Forks - konfyt forks	Fiddle pattern konfyt fork marked JB, possibly Johannes Beyleveld, with twisted stem the terminal engraved with a floral pattern and wrigglework, 10g	ZAR977,50	2
1999/10/11	Forks - konfyt forks	Fiddle pattern konfyt fork by Johannes Beyleveld, 15g	ZAR402,5	2
2019/03/18	Snuff boxes	Silver-mounted cowrie shell snuff box, the hinged cover engraved with wrigglework decoration and with the initials 'M.A.L.X', with crenellated rim and gilt interior, 7cm long	ZAR9380	3
2021/04/11	Teapots	Teapot, Johannes Hendricus Beyleveld, ovoid, the body engraved with flower-filled cornucopias between foliate bands, with leaf-capped wooden handle and swan-neck spout, the hinged domed cover with urn-shaped finial, minor dents, 20cm high, 850g all in	ZAR113800	2

* Price types:

1 - Auction result hammer price

2 - Auction result including buyer's commission

3 - Auction result including buyer's commission and VAT