

Johannes Combrink

Likely active period:

1814-1853

Baptised :

3 June 1781

Died :

9 November 1853

Son of Johannes Combrink and Johanna Elisabeth Essler, baptised at the Cape 3 June 1781. His son Johannes (b1810, d1873) was also a silversmith, as was his son in turn (also Johannes).

These silversmiths were responsible for a large number of items, particularly flatware and snuff boxes, and rank among the most prolific of the silversmiths at the Cape. Earlier pieces exhibit characteristics of Welz's 'Heterogeneous period (1795 – 1830)' – with simple engraved decoration (wavy borders and the geometric floral motif appear to have been favoured), and a combination of styles as well as some unique forms (such as the reeded bowl on the Old English pattern soup ladle, and tubular handle on the marrow scoop illustrated by Welz). I would assume that much of the Fiddle pattern flatware was produced during the 'English Period (1830-1900)'.

Flatware is predominantly in the Old English pattern, with fiddle pattern flatware also fairly common. While the Old English pattern does not always confirm to the English proportions (for example, some examples have rather wider handles and narrow stems, and the drops at the back of the bowl take several forms), the Fiddle Pattern pieces are very standard in form. Pieces found include table- and dessert- spoons and forks, teaspoons, basting spoons, konfynt forks, fish slices, marrow scoops, butter knives, soup- and sauce ladles, and caddy spoons. The only exceptions to these patterns I have come across are the attractive konfynt forks and orange spoons, of typical Cape form with pointed terminals engraved borders and geometric floral motifs, and serving pieces (such as fish slices and marrow scoops) with tubular handles.

Snuff boxes were produced in a variety of forms, including rectangular boxes, some curved, with double lids or with canted corners, as well as round, oval / navette shaped and silver-mounted cowrie shells. Most have engraved decoration – simply wavy or similar borders, geometric floral motifs or foliate cartouches.

A number of other items of domestic silver are found, including beakers, book clasps, furniture fittings, pipe fittings, combs, larger round boxes, salvers, covered jugs and even a needle case. Welz lists several ecclesiastical pieces, including baptismal fonts and patens.

Table flatware

Old English Pattern





Fiddle Pattern





Serving flatware

Fish slices



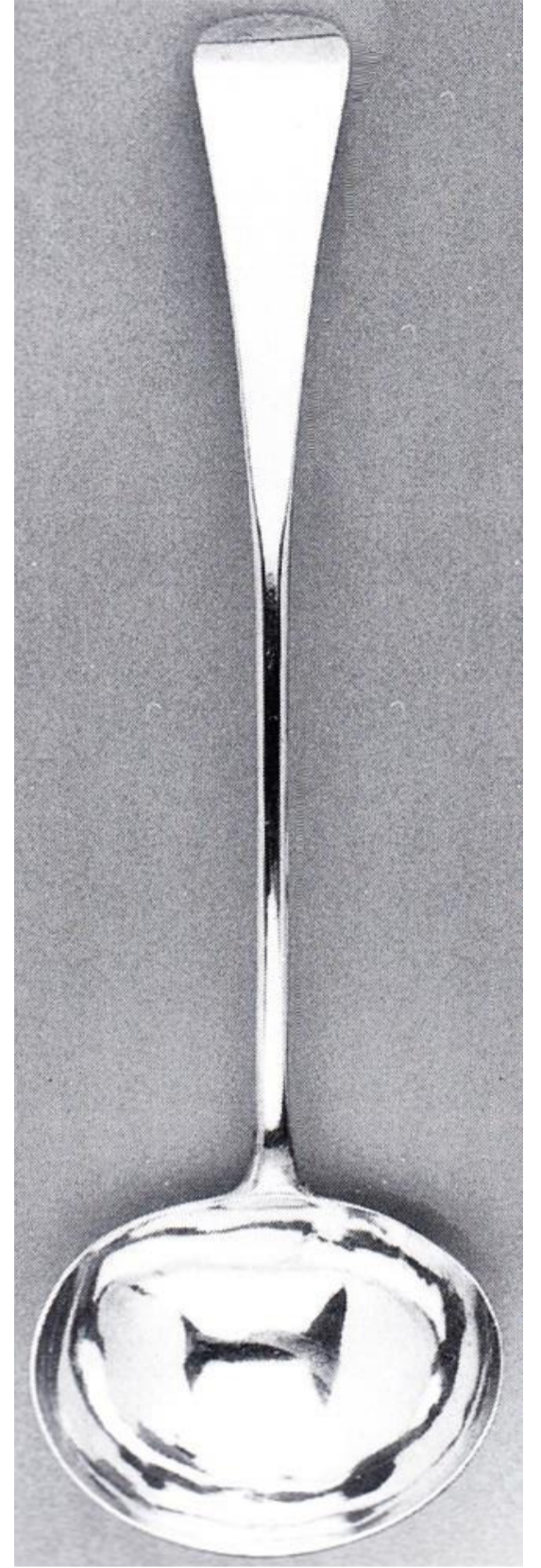
Sauce Ladles



Butter Knives



Soup ladles



Orange Spoons



Basting Spoons

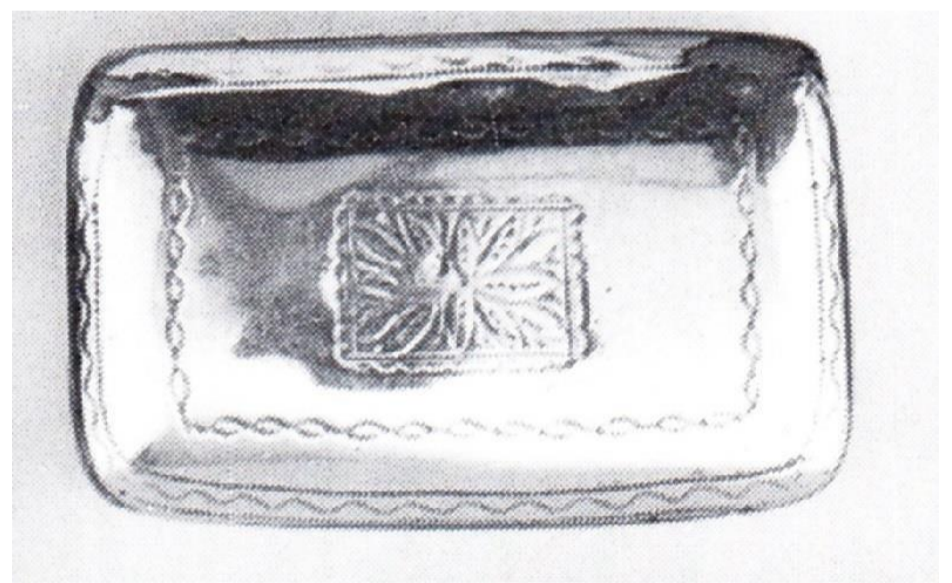


Konfyf Forks



Snuff boxes

Rectangular

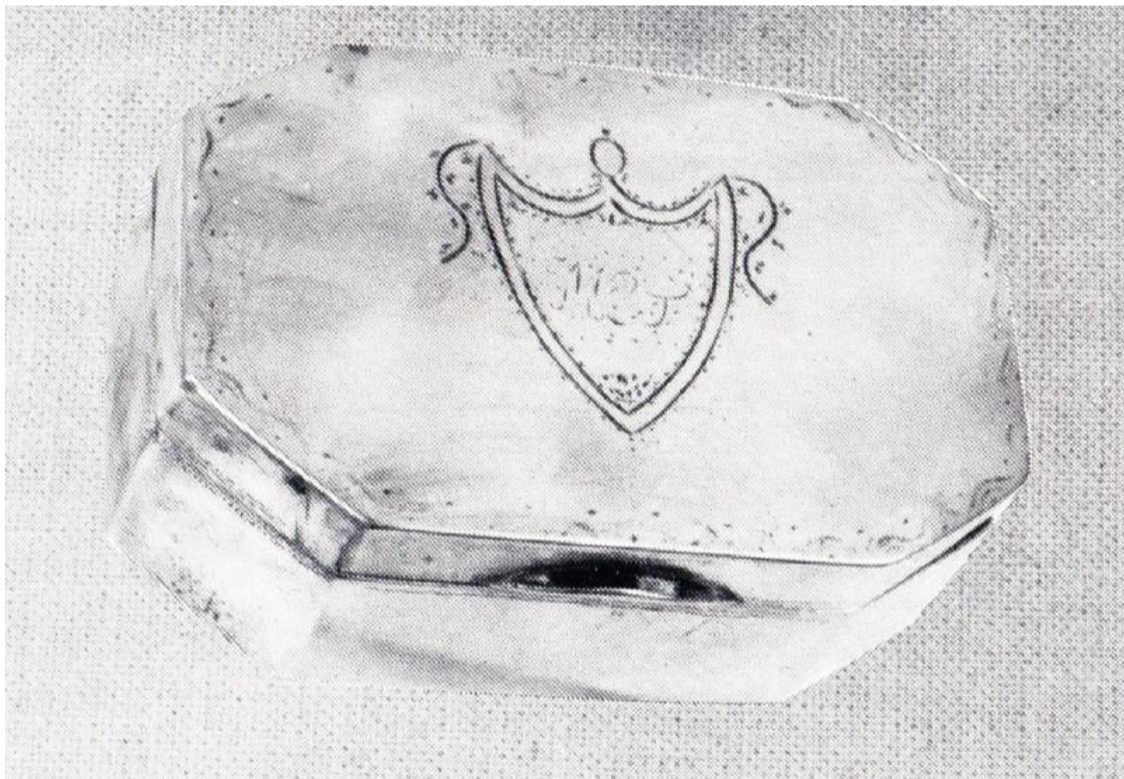


Curved Rectangular



Circular





Other pieces

Box



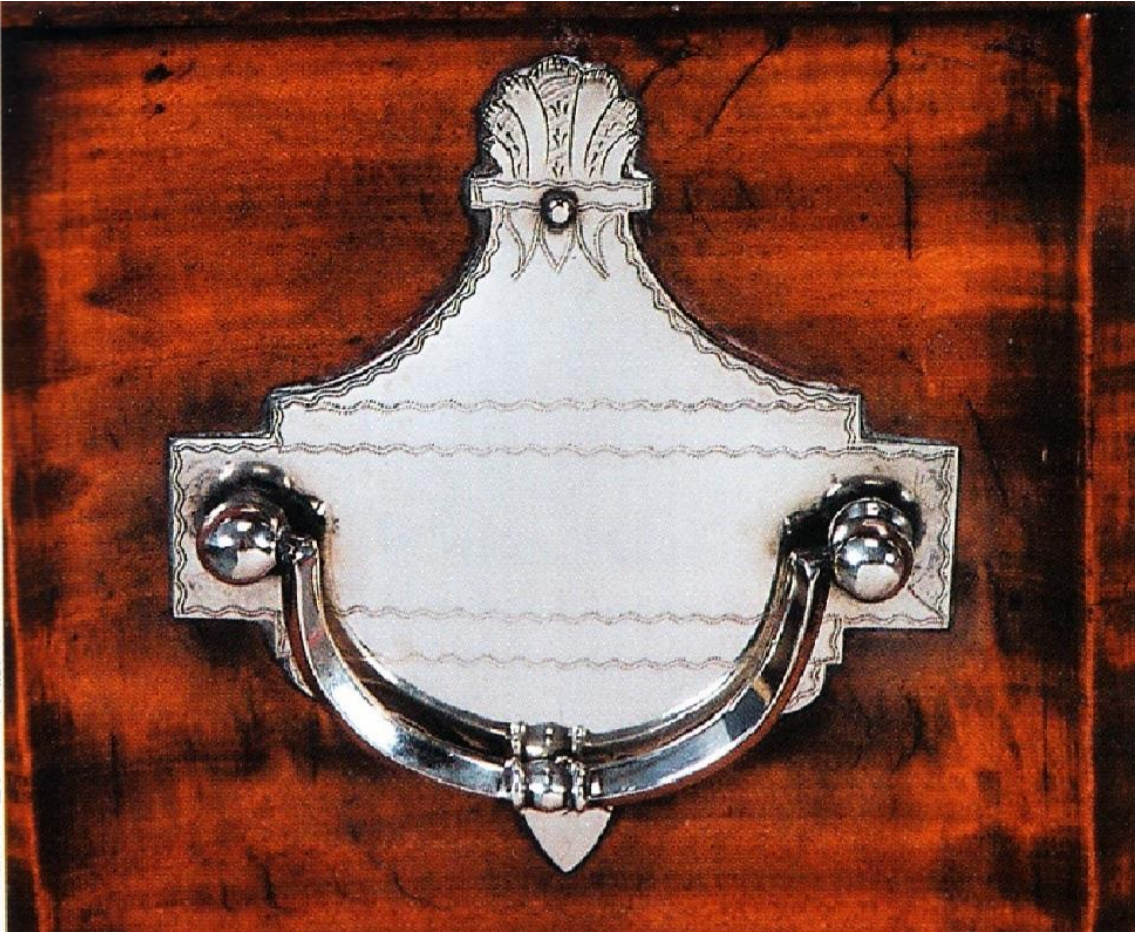
Comb



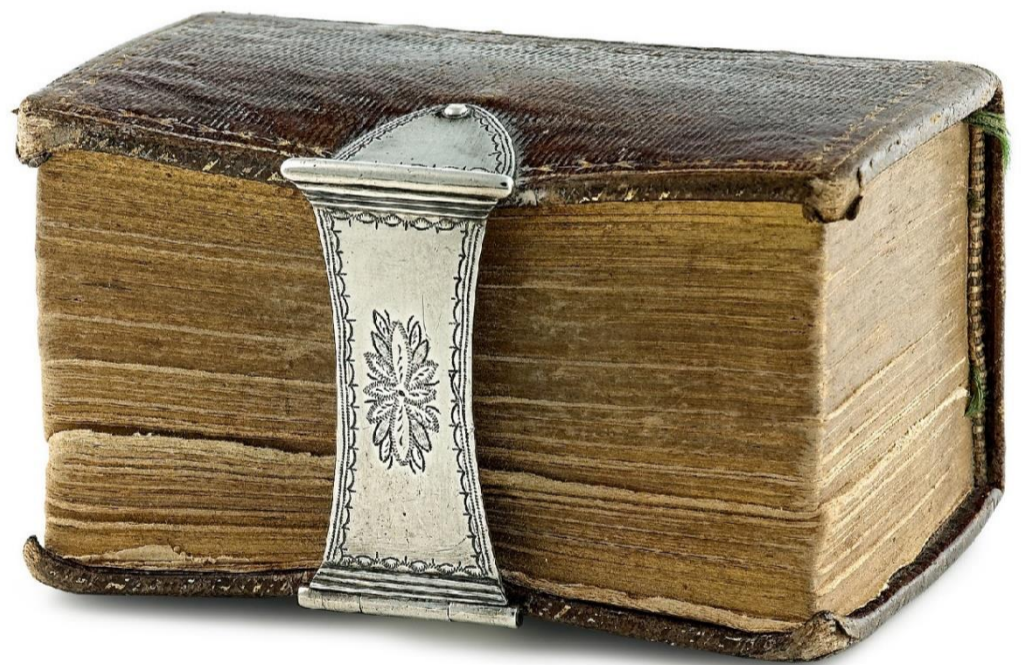
Salver



Furniture Fittings



Book Clasps



Covered Jug



(The finial is not original)

Marks



Rarity indicator

Flatware	Available	Snuff boxes	Available	Other items	Scarce
----------	-----------	-------------	-----------	-------------	--------

Note: a set of flatware of the same category and by the same maker is counted as a single item.

Key (relative rarity within each category):

Available	more than 5% of items in our database
Scarce	1 to 5% of items in our database
Rare	fewer than 1% of items in our database
None	No items encountered

Auction price history

Note: only sales of single items by public auction, including online auction platforms, are shown here. Unsold lots and job lots have been excluded. This list does not purport to be complete.

Sale date	Item category	Item description	Price realised	Price type *
1975/03/03	Spoons - table	Old English pattern tablespoon by Johannes Combrink, 2oz	ZAR70	1
1995/03/29	Ladles - soup	Old English pattern soup ladle by Johannes Combrink, bowl repaired, 235g	ZAR1210	2
1995/03/29	Snuff boxes	Rectangular snuff box by Johannes Combrink, mark defaced, hinged lid centring a flowerhead within wrigglework borders, the base similarly decorated, repaired, 25g, 5cm wide	ZAR1430	2
1997/10/21	Snuff boxes	Snuff box by Johannes Combrink, curved rectangular body with hinged lid engraved with a band of wrigglework and a vacant cartouche, the base engraved with foliate design, dents, 6,3cm wide, 60g	ZAR3850	2
1998/05/26	Snuff boxes	Snuff box by Johannes Combrink, rectangular, lid engraved 'MMB MPL' within wrigglework borders, the base with similar border centring a flowerhead engraving, 6cm wide, 50g	ZAR2640	2
1999/10/11	Forks - konfyf forks	Old-English pattern konfyf fork by Johannes Combrink, 15g	ZAR1092,50	2
1999/10/11	Knives - butter knife	Butter knife by Johannes Combrink, with scimitar-shaped blade and engrave decoration, initialled 'JDL', 40g	ZAR2640	2
2011/03/07	Jugs	Covered jug, Johannes Combrink, engraved with a band of flowerheads and foliage between wrigglework borders, the front engraved with the initials 'DJdV' within a wreath, the hinged cover with later finial, with a leaf-capped wooden handle, 435g, 17cm high	ZAR44560	3

2011/03/07	Ladles - soup	Old English pattern soup ladle, Johannes Combrink, the bowl with a band of reeding, 255g	ZAR9368	3
2011/03/07	Snuff boxes	Double-sided snuff box, Johannes Combrink, each hinged cover engraved with the initials "TGLB" within a wreath, enclosed by wrigglework borders, gilt interior, 100g, 8cm wide	ZAR17824	3
2011/03/07	Snuff boxes	Snuff box, Johannes Combrink, the circular hinged cover engraved with a flowerhead within wrigglework borders, scalloped thumbpiece, the reverse similarly decorated, gilt interior, 40g, 4cm diameter	ZAR7612	3
2011/09/26	Ladles - soup	Fiddle pattern soup ladle, Johannes Combrink, 225g	ZAR12811	3
2012/02/06	Spoons - table	Set of six Old English pattern table spoons, Johannes Combrink, the terminals engraved WA, the reverse with initials IFN, 365g	ZAR5855	3
2014/03/17	Salvers	Salver, Johannes Combrink, circular, the centre engraved with a ribbon-bordered vacant reserve, the rim with alternating bead and foliate border, raised on three claw and ball feet, small area to beaded border restored, 330g, 19cm diameter	ZAR56840	3
2014/10/13	Comb	Comb, Johannes Combrink, the spine applied with an oval plaque engraved with the initials 'SWVDM' within a foliate border, with eleven teeth, some damage to the ends of the teeth, 50g, 8,4cm long	ZAR14779	3
2015/10/12	Forks - dessert	Seven Fiddle Pattern dessert forks, Johannes Combrink, five terminals engraved with the initial 'R', 290g	ZAR8783	3
2015/10/12	Forks - table	Seven fiddle pattern table forks by Johannes Combrink, comprising a set of six, 360g; and another, the stem engraved with the initials 'GAS', 65g	ZAR8783	3
2015/10/12	Snuff boxes	Snuff box, Johannes Combrink, with two hinged compartments, the smaller set into the cover, curved rectangular, the front and reverse engraved with a floral motif within wrigglework borders, the side engraved with the initials 'JMN', gilt interior, 140g, 7,5cm wide	ZAR27284	3
2015/10/12	Spoons - table	Four Old English pattern table spoons, Johannes Combrink, the terminals engraved 'CAPE REG' above a crest, 250g	ZAR7261	3
2015/10/12	Spoons - table	A set of six Old English pattern table spoons, Johannes Combrink, each terminal engraved with the initial 'G', 350g	ZAR5270	3
2015/10/12	Spoons - teaspoons	Six fiddle pattern teaspoons, Johannes Combrink, 125g	ZAR4450	3
2015/10/12	Spoons - teaspoons	Six Old English pattern teaspoons, Johannes Combrink, 100g	ZAR5621	3
2016/03/14	Book clasp	Bible clasp, Johannes Combrink, engraved with a flowerhead within swag and stipple borders, mounted on a Dutch 'Het Nieuwe Testament', the frontpaper with inscription by 'J C Hofmeyr, 8 Meij 1844'	ZAR8197	3
2016/03/14	Snuff boxes	Snuff box, Johannes Combrink, circular, the hinged cover engraved with 'A.C.O' within a wrigglework border, the rim similarly decorated, 55g, 5cm diameter	ZAR9368	3
2016/03/14	Snuff boxes	Snuff box, Johannes Combrink, navette-shaped, the hinged cover engraved with 'WJ' and a flowerhead within a wrigglework cartouche, the rim similarly engraved, the base naïvely engraved, gilt interior, 90g, length 7,7cm	ZAR9954	3
2016/03/14	Snuff boxes	Snuff box, Johannes Combrink, convex, the part-hinged cover engraved with the initials 'A.W.J.P.' and with a flowerhead within wrigglework borders, 70g, 6,5cm long	ZAR9368	3
2016/03/14	Snuff boxes	Snuff box, Johannes Combrink, rectangular with rounded corners, the hinged cover engraved with a foliate panel with wrigglework and stipple borders, gilt interior, the base and sides similarly engraved, 65g, 6,2cm wide	ZAR7026	3
2016/10/10	Tobacco box	Tobacco box, Johannes Combrink, circular, the domed cover and base with part-gadrooned borders, 200g, 10,2cm diameter	ZAR85260	3
2017/02/06	spoons - table	Old English pattern table spoon, the terminal engraved with the initials 'JR', 60g	ZAR1757	3
2019/08/06	Spoons - table	Old English pattern tablespoon, initials PFT are struck on the back of the stem, one small dent on the side of the bowl, weight 62 grams, length 215 mm	ZAR1495	1
2021/02/23	Spoons - basting	Old English pattern basting spoon, Johannes Combrink, 31cm long, 100g	ZAR3800	1
2021/02/23	Spoons - table	Old English pattern tablespoon, Johannes Combrink, 22cm long, 50g	ZAR1300	1
2021/10/05	Snuff boxes	Silver-mounted cowrie shell snuff box by Johannes Combrink, scalloped border, the hinged cover with wrigglework border, centred with a chased floral cartouche, 7,3cm long	ZAR9000	1

* Price types:

1 - Auction result hammer price

2 - Auction result including buyer's commission

3 - Auction result including buyer's commission and VAT