

# Daniel Beets

Likely active period:

**1812-1828**

Born/baptised : unknown

Died : unknown

Illegitimate son of Balthus Wilhelm Beets of Neubrandenburg and Angana of the Cape. His son, Daniel Godlieb, was also a silversmith.

Flatware is generally of the fiddle pattern or, less frequently, Old English, usually plain but sometimes with engraved decoration. Table flatware includes table spoons and forks, dessert spoons, teaspoons and egg spoons. Serving pieces include soup- and sauce ladles, salt or condiment spoons, and basting spoons. Konfynt forks are found with tubular handles.

Snuff boxes are very varied, oval or rectangular in shape, often with crudely engraved decoration, sometimes shaped thumbpieces, and sometimes incorporate other materials, such as an agate panel inset in the lid, as well as silver-mounted cowrie shells.

Other pieces include beakers, furniture fittings and teapots. Welz recorded a sugar bowl bearing Beets' mark, identical to the bowls made by Daniel Heinrich Schmidt except for the finial.

## Spoons and forks

Fiddle pattern



Old English Pattern



Serving flatware

Konfytt forks



Soup Ladles



Sauce ladles



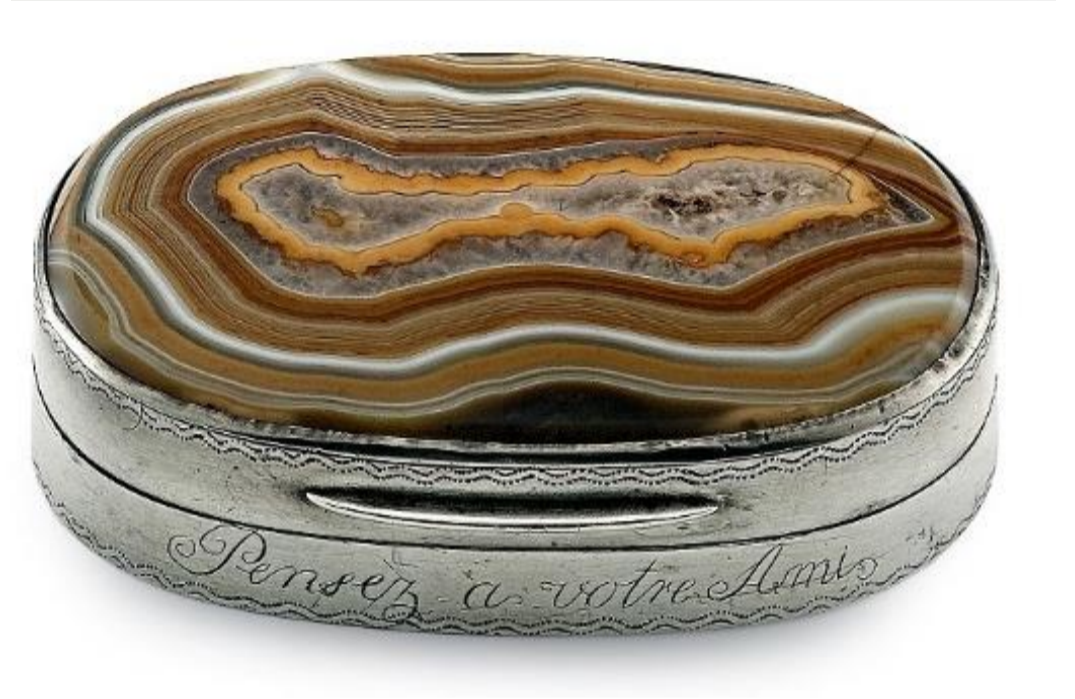
Basting Spoons



Salt Spoons



Snuff boxes

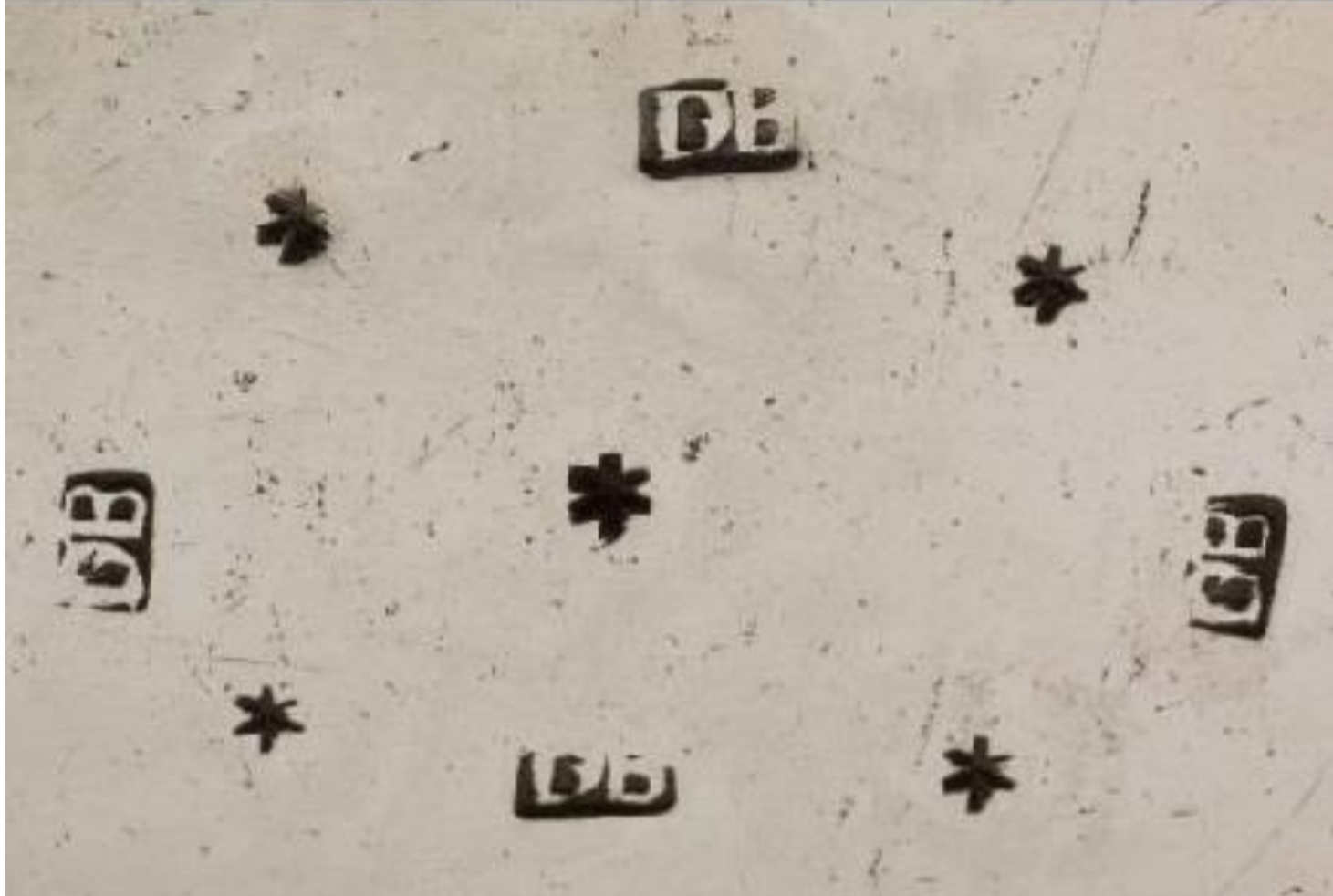


Other pieces

Beakers



Teapots



## Marks



## Rarity indicator

Flatware	Scarce	Snuff boxes	Available	Other items	Scarce
----------	--------	-------------	-----------	-------------	--------

Note: a set of flatware of the same category and by the same maker is counted as a single item.

Key (relative rarity within each category):

Available	more than 5% of items in our database
Scarce	1 to 5% of items in our database
Rare	fewer than 1% of items in our database
None	No items encountered

## Auction price history

Note: only sales of single items by public auction, including online auction platforms, are shown here. Unsold lots and job lots have been excluded. This list does not purport to be complete.

Sale date	Item category	Item description	Price realised	Price type *
1991/10/07	Spoons - basting	Old English pattern hash spoon by Daniel Beets, the terminal engraved with a stylised flower head above the initials BIB, the borders with pricked decoration, 225g. PROVENANCE: according to family tradition, the spoon was originally in the possession of the Burger family	ZAR1700	1
1992/03/12	Ladles - sauce	Fiddle pattern sauce ladle by Daniel Beets, 60g	ZAR770	2
1992/03/12	Ladles - soup	Fiddle pattern soup ladle by Daniel Beets, 250g	ZAR1210	2
1992/03/12	Spoons - dessert	Three fiddle pattern dessert spoons by Daniel Beets, 100g	ZAR440	2
1998/01/29	Furniture fittings	Armoire with silver escutcheon plates by Daniel Beets	ZAR198000	2
2009/10/08	Teapots	Teapot, Daniel Beets, oval with canted corners, the shoulders engraved with bright-cut foliate decoration and wrigglework, the hinged cover similarly engraved above a band of reeding, with a wooden finial, applied with a leaf-capped wooden handle, the body engraved with the initials 'NL', 1120g all in, 19,3cm high. NOTES: This teapot was used for the design of a 25 cent postage stamp, 5 November 1985. A First Day Cover accompanies this lot. LITERATURE: Stephan Welz, Cape Silver, Cape Town 1976, p 106, illustrated. Previously sold: Sothebys Parke Bernet South Africa, 1 November 1975	ZAR105830	3
2011/09/26	Beakers	Double beaker, Daniel Beets, of barrel form, engraved with bands of reeding, the body engraved 'Gustaf Christaf Greffrath 1816', the bases inset with coins dated 1774 and 1775, gilt interiors, 245g, 13,5cm high	ZAR61270	3
2016/10/10	Ladles - soup	Old English pattern soup ladle, Daniel Beets, early 19th century, the bowl with wavy rim, the terminal engraved with a star, the reverse engraved with the initials C.E.P., 245g, 40cm long	ZAR7612	3
2016/10/10	Snuff boxes	Silver-mounted agate snuff box by Daniel Beets, oval, the hinged cover set with an agate stone, with plain thumbpiece, enclosing a gilt interior, the front of the base inscribed 'Pensez a votre Amis', between wrigglework borders, 135g all in, 8,1cm wide. PROVENANCE: accompanied by a letter from James Easton to Charles Attwell Esq. stating that this snuff box is reputed to have been Napoleon Bonaparte's whilst Napoleon was incarcerated on the Island of St Helena.	ZAR90944	3

\* Price types:

1 - Auction result hammer price

2 - Auction result including buyer's commission

3 - Auction result including buyer's commission and VAT